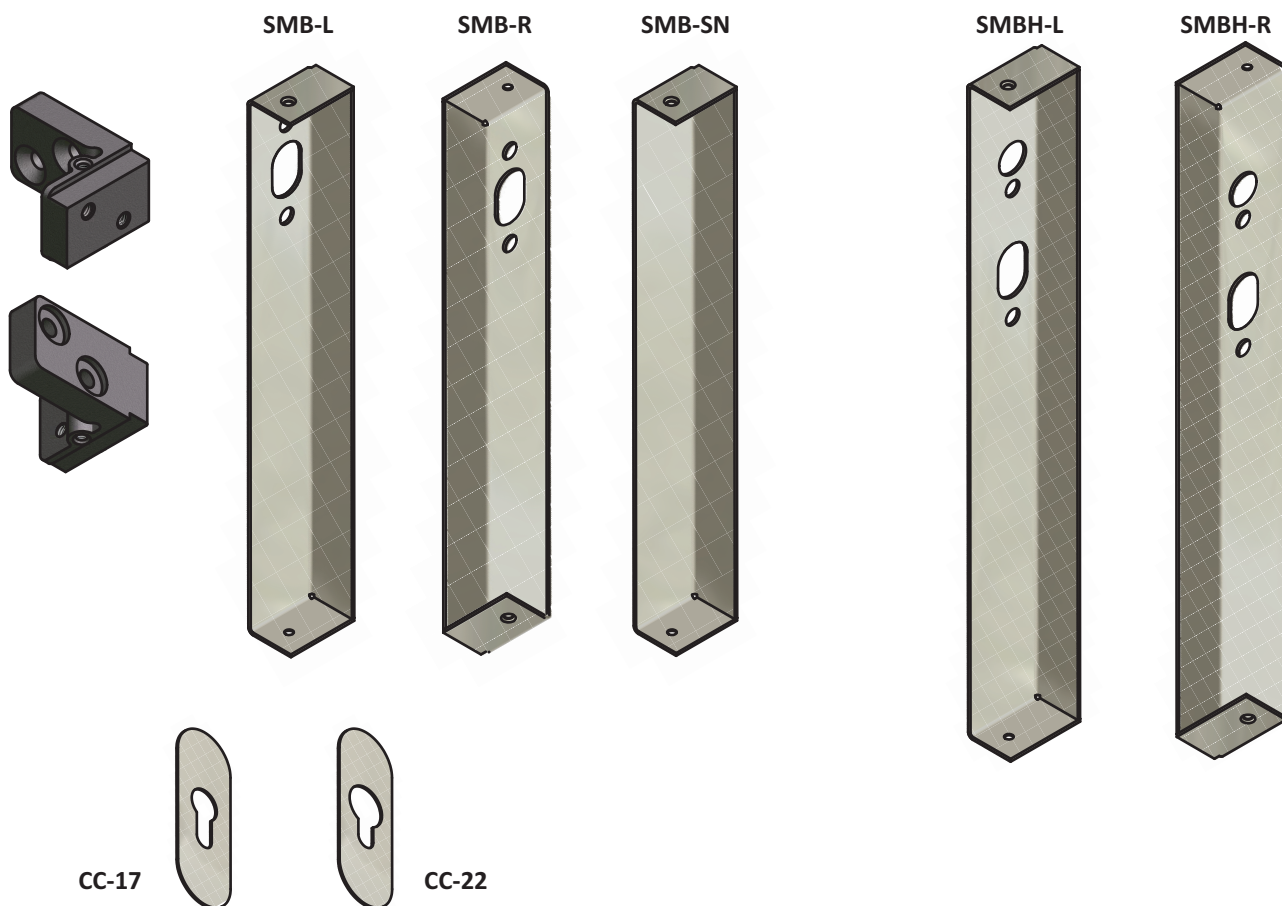


Article nr:
SMB



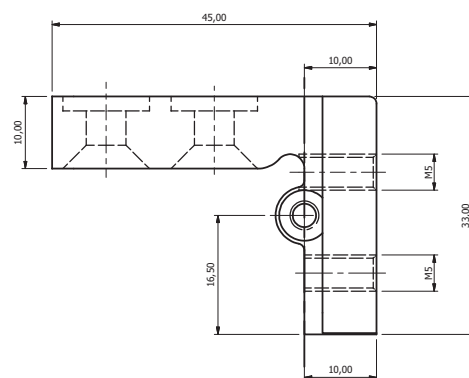
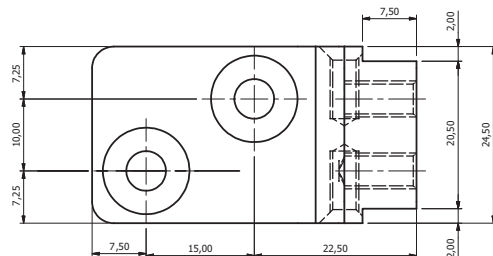
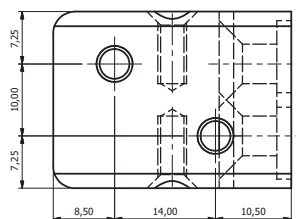
SMB (SURFACE MOUNT BRACKETS)

The surface mount bracket (**SMB**) consists of 2 fixation blocks and 1 stainless steel cover. The installation needs to be done on the secure side of the door and can be vertical as well as horizontal.

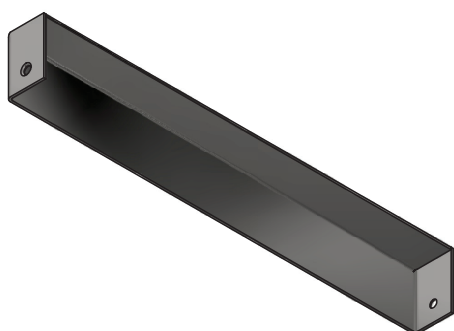
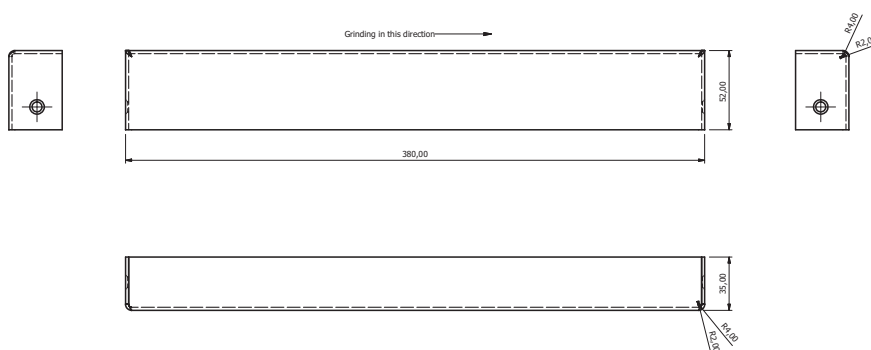
Available models:

- **SMB-SN:** for the A1 Sanocyl and the striker plate - this cover has no cylinder opening
- **SMB-L:** for the A1 with backset 30mm and 17 or 22mm cylinder, when the lock is installed to the Left of the striker plate; fixation holes are made for mounting the security escutcheons (SE-17 or SE-22). In case the security escutcheon is not used cylinder cover plates are available (CC-17 and CC-22 for 17 and 22mm cylinders respectively)
- **SMB-R:** idem, but used when the lock is installed to the Right of the striker plate
- **SMBH-L:** for the A1 with backset 35mm and 17 or 22mm cylinder, when the lock is installed to the Left of the striker plate; fixation holes are made for mounting the security escutcheons with handle (SEH-17 or SEH-22).
- **SMBH-R:** idem, but used when the lock is installed to the Right of the striker plate

Article nr:
BB-GI028 (SMB fixation block)

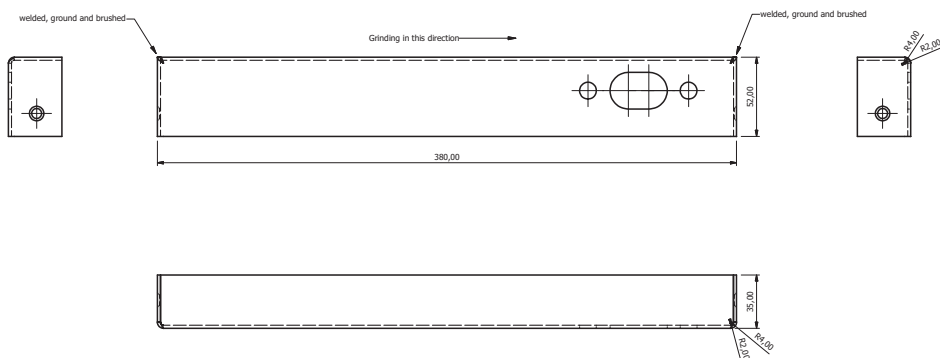


Article nr:
SMB-SN

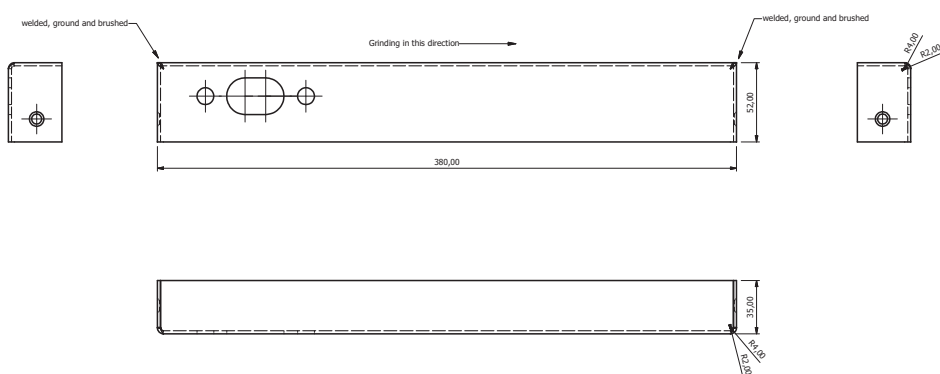


ELECTRO-MECHANICAL LOCKS - Surface Mount Bracket

Article nr:
SMB-L



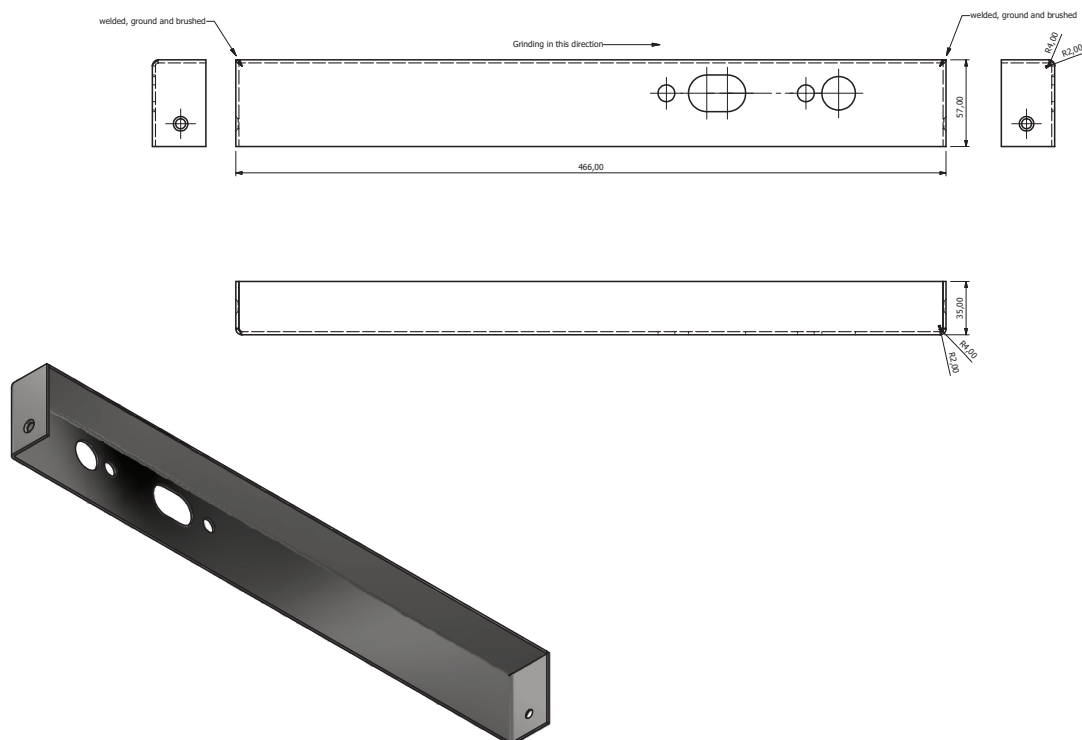
Article nr:
SMB-R



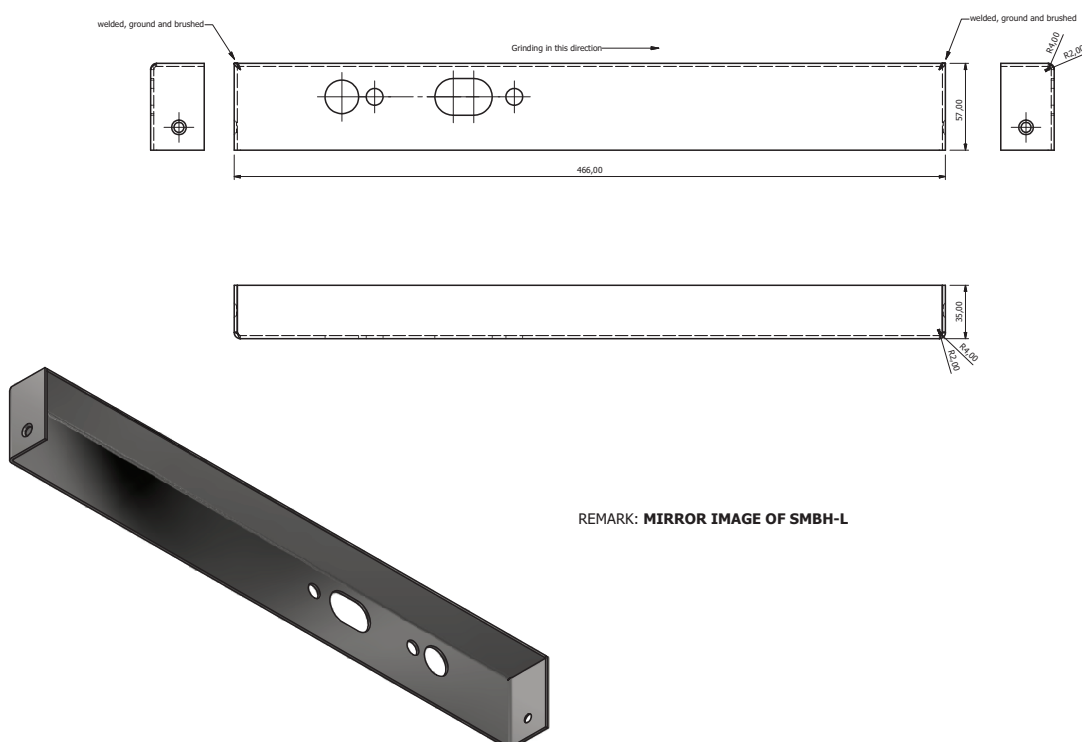
REMARK: MIRROR IMAGE OF SMB-L

ELECTRO-MECHANICAL LOCKS - Surface Mount Bracket

Article nr:
SMBH-L



Article nr:
SMBH-R



REMARK: **MIRROR IMAGE OF SMBH-L**